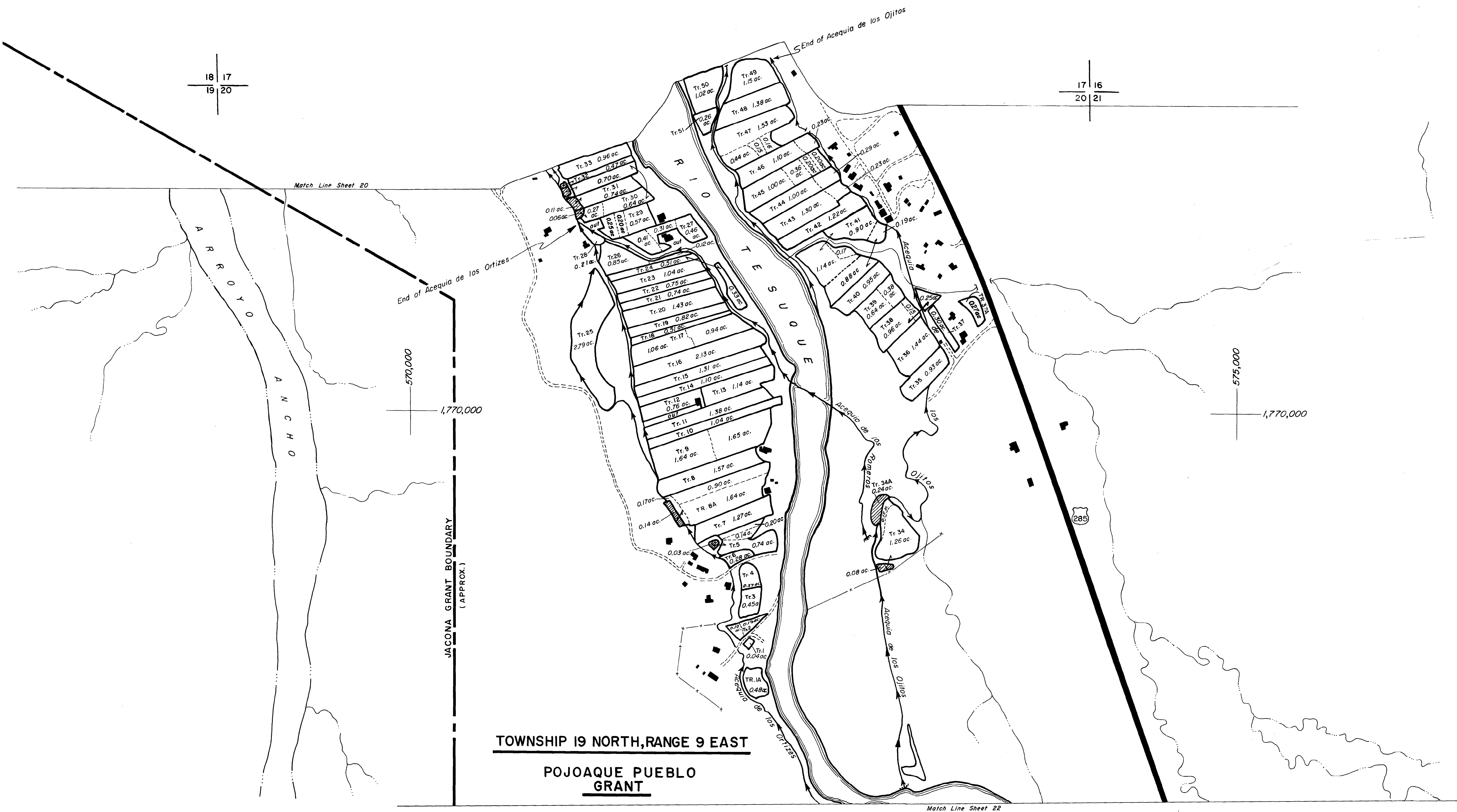

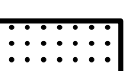
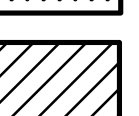


18 | 17
19 | 20

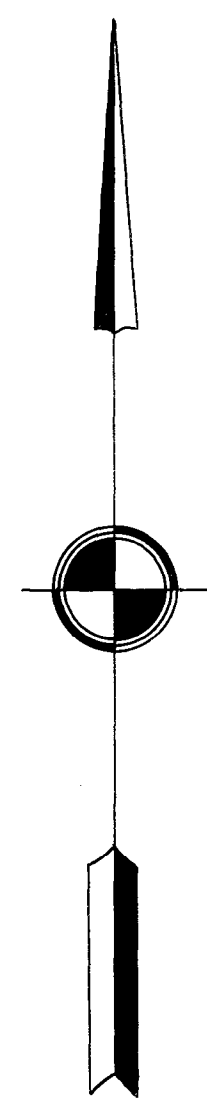
17 | 16
20 | 21



Legend

-  Irrigated Tract Boundary
-  No Right Tract Boundary
-  Pond

TOWNSHIP 19 NORTH, RANGE 9 EAST
POJOAQUE PUEBLO GRANT



STATE OF NEW MEXICO
OFFICE OF THE STATE ENGINEER
Tom Blaine, P.E., State Engineer

UPPER RIO GRANDE
HYDROGRAPHIC SURVEY
NAMBE - POJOAQUE - TESUQUE 1964 - 2017
Final Judgment and Decree

ENGINEER SURVEYOR STEREOCOPIATION TRACED BY APPROVED	F. R. ALLEN F. BARRON J. L. THOMAS A. BACIGALUPA	SCALE 1" = 300' SHEET NO. 21
------------------------------------------------------------------	-----------------------------------------------------------	---------------------------------